



### 禁酒勸行費は 四千万弗を要求

#### 徹底せよ三億弗は 必要に三禁酒委員が報告

### 禁酒勸行の 困難な州

#### 桑港も同法 勸行されぬ

禁酒勸行の困難な州 桑港も同法 勸行されぬ

### アルコール 数類製の 最も多く密賣

#### 内でも多く密賣 禁酒勸行の困難な州

アルコール 数類製の 最も多く密賣

### ドーランの報告で 桑港當局は不満

#### 禁酒勸行官や警察署長は 圓満に勸行すと聲明

ドーランの報告で 桑港當局は不満

### 古田虎城氏 送別會

#### 来る八日に 米國內の何處より

古田虎城氏 送別會

### 米國水上署 救助者總數 三千九百名

#### 一人で全米新聞の 植字が近づく

米國水上署 救助者總數 三千九百名

### 日本歌劇 来る月曜夜に

#### ホレス高校の 一人で全米新聞の

日本歌劇 来る月曜夜に

### 聖ルカ病院の 再建費募集協議

#### 昨日正午フエヤモントで 東京駐在二氏の演説

聖ルカ病院の 再建費募集協議

### 甲州と越後(二) 尺魔生

甲州と越後(二) 尺魔生

### 加州新聞大観

加州新聞大観

### 桑港市の犯罪は 著しく減少す

#### 現署長就任の八週間に 市内の警察状態を報告

桑港市の犯罪は 著しく減少す

### 壮丁と人口に 注目さる、研究

#### 今度自殺率を調査 東北大學でトーマス博士

壮丁と人口に 注目さる、研究

### 時間勵行 早く出せ

#### 郵便局は混雑 防止運動起す

時間勵行 早く出せ

### 年末の賀状 早く出せ

年末の賀状 早く出せ

### 悪口の叩き合ひ

悪口の叩き合ひ

### 昨日出帆

#### タフト船 桑港から

昨日出帆

### 日米要求

#### 婦人入用 七、八、九、十、十一、十二、十三、十四、十五、十六、十七、十八、十九、二十、二十一、二十二、二十三、二十四、二十五、二十六、二十七、二十八、二十九、三十、三十一、三十二、三十三、三十四、三十五、三十六、三十七、三十八、三十九、四十、四十一、四十二、四十三、四十四、四十五、四十六、四十七、四十八、四十九、五十、五十一、五十二、五十三、五十四、五十五、五十六、五十七、五十八、五十九、六十、六十一、六十二、六十三、六十四、六十五、六十六、六十七、六十八、六十九、七十、七十一、七十二、七十三、七十四、七十五、七十六、七十七、七十八、七十九、八十、八十一、八十二、八十三、八十四、八十五、八十六、八十七、八十八、八十九、九十、九十一、九十二、九十三、九十四、九十五、九十六、九十七、九十八、九十九、百

日米要求

### 物産

#### 貨物 貨物 貨物

物産

### 貸問

貸問

### 貸問

貸問

### カマボコ 製造卸小賣

金門商會

### 藤田齒科醫院

藤田 齒科

### 北米病院

原 昌親

### 板谷元雄

板谷 元雄

### 日本病院

日本 病院

### 梅毒、淋病専門

梅毒、淋病 専門

### 武田菓子店

武田 菓子店

### 練羊羹

練 羊羹

### 御菓子

御 菓子

### 鮮魚、精肉

鮮魚、精肉

### 和洋食料雜貨一切

和洋食料 雜貨 一切

### 正糖、味噌、醬油製造元

正糖、味噌、醬油 製造元

### 資本金一億圓 三井銀行

資本金一億圓 三井銀行

### 海外特別當座預金

海外特別當座預金

### 大正藥舖

大正 藥舖

### 防長旅館

防長 旅館

### 花はスター花店

花はスター花店

### 上田産院

上田 産院

### 日本郵船株式會社

日本郵船株式會社

### 帆出船商阪大

帆出船商阪大

### DOLLAR STEAMSHIP LINE

DOLLAR STEAMSHIP LINE

### 桑港旅館

桑港 旅館

### 永本旅館

永本 旅館

### 肥後屋

肥後 屋

### 紀の國屋

紀の國 屋

### 安藝ホテル

安藝 ホテル

### エビスホテル

エビス ホテル

### 近江屋旅館

近江屋 旅館

### 北米旅館

北米 旅館

### 命丸

命 丸

### ウイキ

ウイキ

### セフテテ

セフテテ

### 大正藥舖

大正 藥舖

### 命丸

命 丸

### ウイキ

ウイキ

### セフテテ

セフテテ

### 命丸

命 丸

### ウイキ

ウイキ

### セフテテ

セフテテ

### 命丸

命 丸

### ウイキ

ウイキ

### セフテテ

セフテテ

### 命丸

命 丸

### ウイキ

ウイキ

### セフテテ

セフテテ

### 命丸

命 丸

### ウイキ

ウイキ

### セフテテ

セフテテ



農業と経済

米國の産油は 米國の船で輸送

大石油會社の連繫成る 我國油船の大脅威
米國大石油會社は、我が國に對して、一九一八年の...

桑港市場

十二月七日

Table with market prices for various goods like silk, cotton, and other commodities.

新女性鑑

菊池寛 作
女性觀の相違
大阪神戸京都一週間は、...

新年文藝募集

縮切十二月十五日
日米新聞社
募集要項...

種子

種子は
本場のギョーイで沿岸
百本中最大の種子生産
販賣者たる
Gowans Seed Co.
P. O. Box 681
Alhambra, Calif.

時間勵行

「時間勵行」
「時間勵行」...

種苗

種苗
特撰種子物
レタス、アニオン
スピネチ、ピー、
キャロット、ピーツ
セロリ

日米新聞社

日米新聞社
募集要項...

Large advertisement for '大坂大藥店' (Osaka Daikyo) featuring various medicines like '胃腸ダイゼリン' and 'インカム'.

Large advertisement for '大御大映畫' (Daigyo Daieiga) featuring a film program with dates and showtimes.

### 南加版

#### 土地家屋を子供が買ふに差支ふるか

土地法違反は廣大な農耕地を買ひ取る事だぞ

#### 竹内氏事件経過

竹内氏の長女が子孫の土地家屋を賣つた事案が各地で起つた後、竹内氏は土地法違反の罪を問はれた。...

#### 御大典奉祝會

寄附者多數

#### 散港

領事館

#### 夜間

雜貨商組合

#### 觀世流師匠泉氏

送留別會開催

#### 時間勵行

#### 宗教活動

映畫開催

#### 春洋丸

羅府港出帆

久保田氏結婚

イセエボがくつた

御大典奉祝會

寄附者多數

散港

夜間

觀世流師匠泉氏

時間勵行

宗教活動

春洋丸

羅府港出帆

久保田氏結婚

#### 怪奇探偵

娘煙術師

#### 時間勵行

#### 日米支社

#### 肺病に特效

#### 勸工場

#### 藤井事務所

#### 太平洋印刷所

#### 京押繪

#### 米國一手發賣元

#### 小島商店

#### 肥満する甘いものの代りに

ラッキーを召し上れ

#### 京都吉村商店

#### 西陣織物

#### 大久保齒科醫院

#### 肥後屋ホテル

#### 確実迅速

#### 中筋順

#### 羅府日米新聞

#### かまぼこ

#### 第二街グラー

#### 井上正夫主演

#### LUCKY STRIKE CIGARETTES

#### かまぼこ

#### 第二街グラー

#### 井上正夫主演

#### 河合太洋

#### 富士活動常設館

#### あまの瓶詰

#### 甲山エキスプレス

#### 太陽光線治療器

#### 有働貞三

#### 小島宇三郎

#### LUCKY STRIKE CIGARETTES

#### かまぼこ

#### 第二街グラー

#### 井上正夫主演

#### 河合太洋

#### 富士活動常設館

#### あまの瓶詰

#### 甲山エキスプレス

#### 太陽光線治療器

#### 有働貞三

#### 小島宇三郎

#### LUCKY STRIKE CIGARETTES

#### かまぼこ

#### 第二街グラー

#### 井上正夫主演

#### 河合太洋

#### 富士活動常設館

#### あまの瓶詰

#### 甲山エキスプレス

#### 太陽光線治療器

#### 有働貞三

#### 小島宇三郎

#### LUCKY STRIKE CIGARETTES





Newspaper For All Peoples Interested In The Welfare of Japan And the Japanese People

# The Japanese American News

THE LARGEST JAPANESE NEWSPAPER PUBLISHED OUTSIDE OF JAPAN

The largest English Section Published Daily by Any Japanese Paper On This Continent

NUMBER 10478

Entered at the San Francisco Post Office as Second Class Matter.

SAN FRANCISCO, CALIF., SATURDAY, DECEMBER 8, 1928.

Copyright 1928 By The Japanese American News

Per Month \$ 1.00 Per Year \$ 11.00

## RIOT MARKS ARRIVAL OF LABOR CHIEF

### Albert Thomas Visits Japan On Important Mission

TOKYO, Dec. 7.—(Special)—The arrival here of Albert Thomas, chief of the International Labor Bureau of the League of Nations, was marked by riotous demonstrations and clashes which were given prominence by the metropolitan press here.

As the distinguished labor chief arrived at the Tokyo Grand Central station, a mob of laborites of the left and right wings clashed with each other with such violence that a squad of police arrived on the scene and carried off eighteen of them to the police station.

### MOB DAMAGE STRUCTURE

In the Shiba district a mob stormed the Labor-Capital Building and wrought considerable damage to the structure, which was built by the government for the purpose of housing the labor-capital cooperative committee and the office of the Japanese branch of the International Labor Bureau. The disgruntled left element had considered the building as an example of the government's hypocritical gesture to labor.

In an interview to the press upon his arrival here, Thomas declared that his purpose of the trip to the Far East was to organize a branch of the Labor Bureau in China and to hold conferences with the Japanese government officials and labor leaders with the object of hastening Japan's ratification of the various labor conventions promulgated in Geneva during the last several years.

### Miss Baba Chosen Leader of Walnut Grove Girls' Club

WALNUT GROVE, Dec. 7 (Special)—Miss Baba, popular Buddhist girl of this district, was elected president of the Shingaku Kwai or the White Chrysanthemum Club, at its regular meeting held Sunday. The members of this Buddhist society desire to contest with any other organization in a friendly match of the "karuta" game, it was announced by Miss Grace Nozoshi secretary.

The new officers elected are: President—May Baba; vice president—Cladys Ioka; secretary—Grace Nozoshi; treasurer—Mae Matsumoto; athletic manager—Ayako Fujii; athletic leader—Rose Matsumoto.

## Two Chinese Americans Win Fight for Office in Hawaii Election; Leading Daily Welcomes Orientals in Politics

HONOLULU, Dec. 7.—(Special)—Commenting upon the successful fight of two Chinese candidates for political offices in the territory of Hawaii and the good race made by a Japanese on the Republican ticket for seat in the House at the recent election the Honolulu Advertiser one of the two leading American papers welcomed the entrance of Oriental blood in the political arena. The editorial follows:

"Among other things for which Hawaii is to be congratulated in its features of government is the entrance of American citizens of Oriental blood into the arena for political preferment. In the election just closed two Chinese Americans were re-elected to office. They had filed with credit. Yew Char won his fight for reelection to the lower house. Dr. Dai Yen Chang was returned to the board of supervisors. James G. Moriyama made a good race on the Republican ticket for representative though he lost."

### WISE TO GIVE THEM CHANGE

"There is wisdom and justice in giving these nationalities a voice in government. They represent a great body of citizens. They have been educated in Hawaii and are deeply interested in the problems that confront the territory. Their ambitions should be encouraged not only for their own right and benefit but for the larger benefit to the community."

"Hawaii is destined to be a state of mixed races speaking the English language. There is no reason why the Oriental, Hawaiian born, should not make as good a record in public office as his contemporaries of the Western world. So far as they have had an opportunity to show their metal they have proved active, intelligent, liberal and as wise in action as their fellows in the legislative bodies."

### HAWAII IS OPEN MINDED

"Hawaii has always had an open mind on the question of equality. Racial prejudice, where it existed, has been kept in the background. At present it is hardly discernible in any quarter."

"There is every reason for encouraging the citizens of Oriental blood to enter the field of politics. If an aspirant fails at one election campaigning will bring him to notice and make him more confident for another trial. As time goes on more and more of such men will appear asking recognition at the polls. The success of these young men in office should encourage others like them to seek a place in the government of the people by the people."

By being punctual you save other people's time—and yours.

## HOSPITAL IN JAPAN PLAN OF CLERGY

### Drive for Funds Gets Under Way With Big Luncheon

Reconstruction by the American people, of St. Luke's International Hospital, Tokyo, destroyed by the 1923 earthquake, is one of the greatest possible aids toward strengthening relations between this country and Japan. Rt. Rev. Charles S. Reifsnider, Bishop of Tokyo, told clergy of the Episcopal diocese of California at a luncheon at the Fairmont Hotel Friday.

"Modern hospital development as known in the United States does not exist in Japan," Bishop Reifsnider said. "Disease causes 80 per cent of the poverty in Nippon. Of this tuberculosis is responsible for three-fourths. To the Japanese St. Luke's stands for the best in modern nursing, school clinics and public health methods."

### RECOGNIZED BY GOVT

"St. Luke's established the first pre-natal and post-natal clinics in Japan. Also, one of the first maternal clinics. The nursing school is the first with advanced standards and is the only nursing school to receive official recognition from the government. Since the earthquake St. Luke's has been housed in temporary wooden barracks. An American committee is seeking to raise \$2,500,000 to complete a fire-proof and "quake-proof" plant. Material and equipment for the hospital will enter Japan duty free."

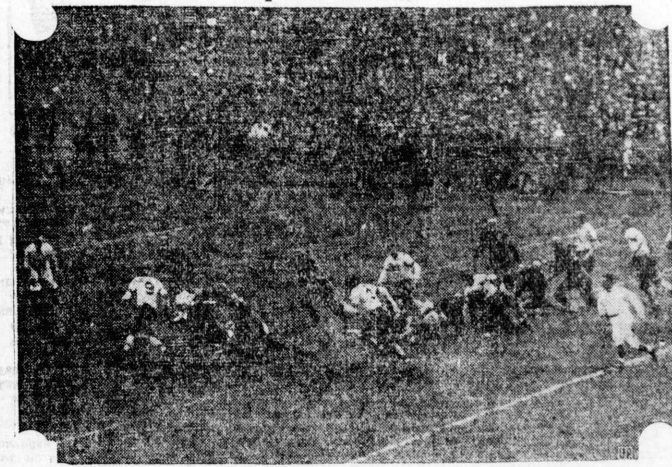
### TO RAISE FUND IN WEST

A gift of \$400,000 from the Rockefeller foundation to endow the school of nursing was announced and the clergy present unanimously endorsed the hospital project and the effort to raise \$500,000 for the fund on the Pacific Coast. Rev. W. A. Brewer of St. Paul's Church, Burlingame, presided in the absence of Bishop Edward L. Parson, who is ill.

## Sac'to Templars Vanquish Florin Cagers 17 to 15

SACRAMENTO, Dec. 7.—(Special)—The newly organized basketball team of the Buddhist Sunday School won its first game on December 2. The opponents were the lightweight cagers of the Florin Y. M. B. A. After four exciting quarters the score stood at a tie, so an extra period of five minutes was played off to decide the winner. The Sacramento boys won by the narrow margin of one goal—17 to 15.

## West Conquers East at Football



One of the thrilling moments in Stanford's 25 to 0 victory over the Army. Sims of Stanford getting off a 14-yard run during the second quarter.

## SHOGUNS TO FACE NISSEI GRID SQUAD

### Showa Men Favored As Teams Set for Tilt at Ewing

With the northern Calif. Japanese football championship at stake, the Showa Club will enter its first and last game in San Francisco this year when it meets the Nissei eleven from Berkeley at the Ewing Field this afternoon (Saturday). The game starts at 2:15 o'clock.

In the absence of the power team which went against the Sacramento Japanese Student Club a few weeks ago, Showa speed varsity will defend the title which uneasily rests upon the Shoguns.

The Showa lineup follows: Saito, Tanaka, Tabata ends; Fukushima, Hayashi, Tshizu tackle; Moriy, Mimami, guards; Yamamoto, Omoto, center, Yama, Nambu, Hasegawa, half; Yamakawa, quarterback; Beimoto full.

## Authorities Try To Break Japanese Students' Strike

SAPPORO, Dec. 7.—(Special)—The authorities of the Hokkaido Imperial University are attempting to break the student strike by sending cards to the striking students threatening punishment for their rebellious action if they do not return to school for study.

The Alumni Association attempted to intervene in the strike in behalf of the students, but the student body refused to be interfered in their fight for the right to freedom of social science research.

The strike began a few days ago when the president of the university dissolved a student research club for discussing Marxian theory.

## Britain To Stop Building On Last Singapore Base

LONDON, Dec. 7.—(Special)—The Daily Telegraph today carried an item declaring that due to the increasing need of cooperation of Japan and Great Britain in China and the Far East the last division of the building program for the huge naval base at Singapore will probably be abandoned.

The extensive fortification and reconstruction of the base is being followed with considerable interest by the Japanese people, who regard it as an unnecessary menacing gesture against Japan, a friendly nation.

## Saitama Prefecture Assembly Abolishes Licensed District

URAWA, Japan, Dec. 7.—(Special)—For the first time in the Japanese history a prefectural assembly voted to abolish licensed quarters within its territory and execute its decision by immediate enforcement.

The Saitama Prefectural Assembly passed the bill unanimously. The enforcement bill also carried by a unanimous vote.

## Sac'to Buddhists Acquire New Bus For Sunday School

SACRAMENTO, Dec. 7.—(Special)—A luxurious and spacious new automobile bus has arrived at the Sacramento Buddhist Church to be used for the purpose of taking the children in the Sakuru Kindergarten classes to and from school daily. The money for purchasing the bus was raised by the Sacramento Y. M. B. A. in October by putting on a moving picture show. This beneficial act was done to commemorate the twenty-fifth anniversary of the organization.

Although designed primarily for the use of kindergarten children, the bus is spacious enough to be convenient for their elders as well. Thus the young people of the Y. M. B. A. and the Reijo Kwai will find it very useful as a means of transportation to neighboring cities for athletic contests.

## SHOWA BOYS PLAY TODAY

### Local Cagers to Meet Humboldt in Community Court

A capacity crowd of basketball enthusiasts is expected Saturday night December 8, at the Community court when the Showa five plays its first big game of the season against the highly touted Humboldt five.

The San Francisco Y. M. B. A. cagers strong contenders for the B class championship, will play one of the Bay district teams in the preliminary from 7:30 o'clock.

### STRONG P. A. A. U. TEAM

In the main tilt the Humboldt team, which has several wins over college fives to its credit, enters the court tonight a decided favorite. The Showa squad is composed of last year's veterans and a large number of new players, all of whom will show their skill at some period of the game. The strength of the Japanese team will be tested tonight as a close game against a team of Humboldt's caliber will undoubtedly establish Showa's prestige in this district.

### Y. M. B. A. GAME

In the preliminary the local Buddhist boys will play a team of their own size. They recently defeated the Sacramento Wakaba and the Stockton Y. M. B. A. in their northern invasion, and is expected to give a good showing against any team.

### Y. M. C. A. NEWS

The Blazing Arrow comrades will hold important meeting tonight Saturday at 8 o'clock. Members are requested to attend.

## OUR JUNIOR SECTION

TODAY'S BIRTHDAYS  
George Hishnuma of East Lake, Colorado and Roy S. Sakasegawa of Watsonville.

George and Roy are both eleven years old today. Isn't it a queer coincidence that they should be eleven on the same day. Well, here are our best wishes for their happy birthday.

### TODAY'S NEW MEMBER

Martha Ida, Route 1, Box 98, East Lake, Colorado, age 8, birthday February 22.

### Here are Martha's joke and riddle:

Harry: I dreamed that I was eating candy.  
Henry: Why didn't you wake me up so I could have some. ....

### I am red. Sometimes I am green. I keep all winter if Jack frost does not catch me. What am I. Ans. An apple.

By being punctual you save other people's time—and yours.

## S. F. Chinese Make Protest Against Immigration Rule

The Chinese Consolidation Benevolent Association, otherwise known as the Chinese Six Companies, sent telegrams to President Coolidge and other high government officials yesterday protesting against recent rulings of the Department of Labor under which, it asserts, during the last month immigration officials have treated Chinese merchants traveling to and from this country as temporary residents, refusing to issue certificates of re-entry when they leave the United States. This is contrary to time-honored practice, the organization asserts. The Chinese exclusion law of 1924, they claim, protected Chinese merchants, their wives and minor children already in the country.

## SAVANT ON SHINTOISM

### Ancient Worship Is Unifying Factor Says Tsuda

TOKYO, Nov. 25.—(By Mail)—The inseparability of Shintoism to the national life of the Japanese was the theme of a lecture delivered by Mr. Noritake Tsuda formerly of the oriental department of the Metropolitan Museum of Art and of New York University under the auspices of the Japanese Language School, at the Industrial Club.

"We see here," said the speaker, "the relationship of the Trinity—Father (Emperor), Son (People) and God (Grand Sun-Goddess Amaterasu), different from the Christian trinity, but develop through the long history of Japan."

### ANCESTOR WORSHIP

The speaker then pointed out that this relationship had been fostered through the benevolence of the Emperor and achieved through the means of Shintoism. Originally however each profession, weavers, metal workers, farmers, etc. had their tutelary gods. But lest such diverse deities should lead to diverse faiths the unifying idea of the worship of all to the Emperor and the Imperial Ancestor, was developed. CHRISTIANS BOW AT SHRINE

This idea was taught the people through the mythology of the ancients who stressed the principle of ancestor worship. Even when Buddhism was introduced the believers erected images and temples to their forebears (who were not Buddhists) with the idea that such action would comfort them. Again the adoption of Christianity has not in the least altered this attitude towards ancestors, most Japanese Christians do not hesitate to bow before Shinto Shrines.

### SIMILAR IDEAS IN U. S.

"Thus ancestor worship and the oneness of the People through their relation to the Emperor has been the unifying power among the Japanese people. The development of a parallel idea concluded the speaker is

告 豫 業 巡

桑 港 共 七 兩 日 ( 日 , 月 )

リ ド レ ー 共 七 兩 日 ( 日 , 月 )

ア ラ ー 共 七 兩 日 ( 日 , 月 )

サ イ ー 共 七 兩 日 ( 日 , 月 )

サ ー 共 七 兩 日 ( 日 , 月 )

ス タ ー 共 七 兩 日 ( 日 , 月 )

北 都 齊 謙 遊 一 行

御 大 禮 映 畫 ( 日 米 興 行 會 社 提 供 )

聖 上 御 發 策 を 中 心 と せ る 謹 寫 ( 六 日 )

京 都 皇 宮 御 着 叢 を 中 心 と せ る 謹 寫 ( 七 日 )

御 即 位 式 を 中 心 と せ る 御 儀 の 謹 寫 ( 八 日 )

日 活 「 地 獄 觀 音 」 ( 一 萬 三 千 尺 )

天 堂 藥 舖 天 堂

荷 着 新

通 經 丸 五 二 五 十 丸

解 淋 丸 廿 五 粒 入 三 佛

子 宮 座 藥 二 佛 半 佛

金 製 ベ サ リ 一 九 九 丸

THE TENSUDO CO.  
500 E. First St.,  
Los Angeles, Calif.

## CAT TALES



By Pusey