

日米

THE JAPANESE AMERICAN NEWS... PUBLISHED DAILY AT 523 ELLIS STREET, SAN FRANCISCO, CALIFORNIA...

見學團の歓迎

故國人士の厚意を感じ... 本報東京特派員の報告によれば、見學團の歓迎は、...

奥丹後震災地に 低利資金を融通

政府から約四百萬圓を貸與... 本報東京特派員の報告によれば、...

井上準之助氏が 臺銀整理委員長

上院の殿様連委員から除外... 井上準之助氏が、...

鈴木長岡兩代表 國際労働會議の

本日神戸發加茂丸で渡歐... 鈴木長岡兩代表が、...

引揚準備を命ず

總領事館に訓電を發して... 引揚準備を命ず、...

南京事件解決に 日本列強と共同

平和解決を衷心より熱望す... 南京事件の解決に、...

軍艦旗掲揚式の 君が代を謹聴し終り

荒木大尉悲壯の最後を試む... 軍艦旗掲揚式、...

充分覺悟の自決 銃拳で左胸部を貫く

約四十分意識不明にして... 銃拳で左胸部を貫く、...

一命を取止め得んか

重傷だが未だ生命を失はず... 一命を取止め得んか、...

外人區域脅さる

英米軍艦から陸戦隊上陸... 外人區域脅さる、...

婦人子供 漢口日本人

便船のあり次第... 婦人子供、...

米國驅逐艦 フォード號

砲撃され艦... 米國驅逐艦、...

上海總工界 新企業計畫

但し期日未定... 上海總工界、...

共同租界に 佛租界間に

鐵線橋を張る... 共同租界に、...

漢口居残り外人 共産派が跋扈し

河邊に移り萬一に備ふ... 漢口居残り外人、...

古河合併 第二三流銀行

合併維持する... 古河合併、...

日向座礁 青島行の途上

青島行の途上... 日向座礁、...

米國到着 攻馬ハナナより

伊太利の... 米國到着、...

巴那運河 夜間攻撃可能

夜間攻撃可能... 巴那運河、...

支那人衝突 湖南省長沙で

湖南省長沙で... 支那人衝突、...

保守派大勝 ニカラガワ

自由派の... 保守派大勝、...

ダイオサスの祭禮

ギリシア演劇の起原... ダイオサスの祭禮、...

共同租界に 佛租界間に

鐵線橋を張る... 共同租界に、...

米五の重車

1698 Post St. S.F. Calif... 米五の重車、...

SK家具倉庫

Cor. 4th & M Sts., Sacramento, Calif. 810... SK家具倉庫、...

住友銀行

THE SUMITOMO BANK, LTD. Branches: 435 California St., San Francisco, Calif. 1305 S. San Pedro St., Los Angeles, Calif. THE SUMITOMO BANK OF CALIFORNIA, 400 L St., Sacramento, Calif. 住友銀行、...

桑港旅館

桑港旅館、...

日本ホテル

日本ホテル、...

近江屋旅館

近江屋旅館、...

永本旅館

永本旅館、...

ミカドホテル

ミカドホテル、...

大春堂

THE TAISHUN-DO 1423 KERN ST. FRESNO, CALIF. 大春堂、...

小川ホテル

小川ホテル、...

帝國ホテル

帝國ホテル、...

日本ホテル

日本ホテル、...

田村旅館

田村旅館、...

瑞穂商會

瑞穂商會、...

オオオ胃腸丸

オオオ胃腸丸、...

大木堂

大木堂、...

大思想全集 世界大思想全集 各冊一〇〇...

大西郷全集 大西郷全集 各冊一〇〇...

投資物の株式 投資物の株式...

小川ホテル 小川ホテル...

帝國ホテル 帝國ホテル...

日本ホテル 日本ホテル...

田村旅館 田村旅館...

瑞穂商會 瑞穂商會...

オオオ胃腸丸 オオオ胃腸丸...

大木堂 大木堂...

大木堂 大木堂...

大木堂 大木堂...

大木堂 大木堂...

大木堂 大木堂...

大木堂 大木堂...

大木堂 大木堂...

大木堂 大木堂...

布市で出来る 申込人の多いだけ 費用の分擔も軽い

布市で出来る

申込人の多いだけ
費用の分擔も軽い

布市の出展者は、布市に出展するに際して、出展料を納めなければならない。出展料は、出展者の数が多いほど、分擔する金額が少くなる。また、出展料は、出展者の数が多いほど、分擔する金額が少くなる。また、出展料は、出展者の数が多いほど、分擔する金額が少くなる。

雨季終る

雨季終る

本日の雨は、昨日の雨に続き、朝から降った。雨は、昨日の雨に続き、朝から降った。雨は、昨日の雨に続き、朝から降った。

セルマ地方便り

セルマ地方便り

セルマ地方のニュース。セルマ地方のニュース。セルマ地方のニュース。

デレノ便り

デレノ便り

デレノ地方のニュース。デレノ地方のニュース。デレノ地方のニュース。

テレル便り

テレル便り

テレル地方のニュース。テレル地方のニュース。テレル地方のニュース。

リドレ便り

リドレ便り

リドレ地方のニュース。リドレ地方のニュース。リドレ地方のニュース。

盛大な發會式

盛大な發會式

学生俱樂部の盛大な發會式。学生俱樂部の盛大な發會式。学生俱樂部の盛大な發會式。

朝日劇團開演

朝日劇團開演

朝日劇團の開演。朝日劇團の開演。朝日劇團の開演。

大阪我々

大阪我々

大阪のニュース。大阪のニュース。大阪のニュース。

神奈川縣人野遊會

神奈川縣人野遊會

神奈川縣人野遊會の活動。神奈川縣人野遊會の活動。神奈川縣人野遊會の活動。

王佛大野遊會

王佛大野遊會

王佛大野遊會の活動。王佛大野遊會の活動。王佛大野遊會の活動。

テレル野遊會

テレル野遊會

テレル野遊會の活動。テレル野遊會の活動。テレル野遊會の活動。

盛大な發會式

学生俱樂部の盛大な發會式。学生俱樂部の盛大な發會式。学生俱樂部の盛大な發會式。

墓地大掃除

墓地の大掃除。墓地の大掃除。墓地の大掃除。

值段安し

値段安し。値段安し。値段安し。

レント安

レント安。レント安。レント安。

TAYLOR'S TRUNK FACTORY

2110 ALLSTON WAY, BERKELEY, CALIF.

御禮廣告

御禮廣告。御禮廣告。御禮廣告。

石川商店

石川商店。石川商店。石川商店。

佐市旅館業者

佐市旅館業者。佐市旅館業者。佐市旅館業者。

石野寫眞館

石野寫眞館。石野寫眞館。石野寫眞館。

大平館

大平館。大平館。大平館。

山本旅館

山本旅館。山本旅館。山本旅館。

山本旅館

山本旅館。山本旅館。山本旅館。

村華

村華。村華。村華。

莓苗販賣

莓苗販賣。莓苗販賣。莓苗販賣。

種類

種類。種類。種類。

野果類物卸小賣

野果類物卸小賣。野果類物卸小賣。野果類物卸小賣。

精肉、鳥肉、豚肉

精肉、鳥肉、豚肉。精肉、鳥肉、豚肉。

ワシントンマーケット

ワシントンマーケット。ワシントンマーケット。ワシントンマーケット。

石川商店

石川商店。石川商店。石川商店。

石野寫眞館

石野寫眞館。石野寫眞館。石野寫眞館。

大平館

大平館。大平館。大平館。

山本旅館

山本旅館。山本旅館。山本旅館。

山本旅館

山本旅館。山本旅館。山本旅館。

山本旅館

山本旅館。山本旅館。山本旅館。

大坂朝日劇團

大坂朝日劇團。大坂朝日劇團。大坂朝日劇團。

現代喜劇、舊喜劇、悲劇

現代喜劇、舊喜劇、悲劇。現代喜劇、舊喜劇、悲劇。

桑港興行會社

桑港興行會社。桑港興行會社。桑港興行會社。

王府支社

王府支社。王府支社。王府支社。

美州樓

美州樓。美州樓。美州樓。

矢野寫眞館

矢野寫眞館。矢野寫眞館。矢野寫眞館。

犬飼よし子

犬飼よし子。犬飼よし子。犬飼よし子。

丸山商店

丸山商店。丸山商店。丸山商店。

安産院

安産院。安産院。安産院。

湖月堂

湖月堂。湖月堂。湖月堂。

日米新聞社

日米新聞社。日米新聞社。日米新聞社。

天野醫院

天野醫院。天野醫院。天野醫院。

The Japanese American News THE LARGEST JAPANESE NEWSPAPER PUBLISHED OUTSIDE OF JAPAN...

RANDOM THOUGHTS By Yamadori

An American Tragedy

Theodore Dreiser, an unrelenting American realist, wrote the heavy novel in two ponderous volumes, "An American Tragedy."

I have not read the novel, but the New York critics, at the time it appeared before the public, conceded that it was a novel worthy of Theodore Dreiser.

There are several scenes which are astounding for their accurate portrayal of life. The court scene, for instance, is a masterpiece, and the character of the prosecuting attorney, with his crafty eloquence and ferocity, seem absolutely real.

There is not a glimmer of beauty of idealism save in the character of Roberta Alden, the unfortunate victim of the selfishness of man.

KENGAKU-DAN TENDERED A WELCOME BY PREMIER AND MRS. WAKATSUKI

Nichi-Bei Party Visits Mausoleum of Late Emperor at Asakawa

TOKYO, March 30—The members of the Third Nichi-Bei Kengaku-Dan were invited to a luncheon sponsored by the Pan-Pacific Friendship Club today.

PAN-PACIFIC CLUB TO WELCOME PARTY:

The program for Tuesday (April 1) will include a luncheon given by the Pan-Pacific Club at the Sanshu Club and an evening banquet by Hon. Kaju Nakamura, M. P., who, it will be recalled, led a group of Japanese student tourists to America last year.

Lieutenant Attempts Harakiri at Nanking

TOKYO, March 30—Lieutenant Araki, who, together with six sailors, was intercepted and disarmed by Cantonese soldiers on his way from the cruiser Tone to the Japanese Consulate at Nanking, attempted suicide yesterday with bayonet. His action was in accord with the ancient Japanese custom of harakiri for the atonement of disgrace.

Once Again

"A nation is governed not by those who would but by those who can."—Primo de Rivera. "The whole secret of life is to be interested in one thing profoundly and in a thousand other things as well."—Hugh Walpole.

San Mateo Student Club Inaugural Is "Big Hit"

Novel "Shamisen" Accompaniment Lends Color to Oriental Fantasy

The inaugural entertainment given by the Japanese Students' Club of San Mateo, a result of many weeks of faithful preparation, proved to be a gala event.

The social program of this year's Bay Region Christian Conference has been carefully arranged, and now, it is announced as follows: During the banquet on Saturday night, "Shinglin" Omoto will give a "uke" solo, with Kimi Bepp and Mary Tsujisaka as vocalists.

Prominent Sacramentans Announce Engagement

The wedding engagement of Mr. Ishisaki and Miss Esther Miwa, both prominent among the church circles of Sacramento, has been announced.

BIG SOCIAL PROGRAM FOR TWO-DAY BAY REGION CHRISTIAN CONFERENCE

Vocal and Instrumental Solos; and Community Singing Will Be Features

The social program of this year's Bay Region Christian Conference has been carefully arranged, and now, it is announced as follows:

During the banquet on Saturday night, "Shinglin" Omoto will give a "uke" solo, with Kimi Bepp and Mary Tsujisaka as vocalists.

The social that will follow the banquet will be in charge of Goro Mayeda, and half-hour community singing will be led by George Furuta.

MUSIC HALF-HOUR TO BE FEATURE:

From 2:30 to 3:30 p. m. on Sunday afternoon, between the addresses, Louis Tanisuye will sing and Saku Baba will play the piano.

The music half hour from 5 to 5:30 p. m. will be featured with vocal solos by Maki Utsumi, Sada Onoye, and George Furuta. Mr. S. Ito of the N. Y. K. will give a special violin solo.

Sunday night, at the general meeting, the Oakland M. E. Choir will be the musical feature.

The entire social program is in charge of Hisa Fujii, and she is to be complimented on arrangement of such an excellent balance of entertainment for two days.

will take place at the home of Mrs. Miwa in the near future.

S. F. Hawaii Club To Sponsor Dance Party

Novel Program Is Planned To Entertain Large Crowd Saturday

The Hawaii Club of San Francisco will sponsor a dance party on Saturday, April 2, at the Oakland Sons and Daughters Club House on 7th St., beginning at 8:30 p. m.

The purpose of the party is to foster better friendship between the Hawaiian-born and the native Japanese. Many Bay region organizations are invited to attend the "better friendship" dance party.

ON APRIL FIRST (By Iwao Kawakami)

On April first The teacher gave An "ex"—'twas the worst— And the class did surely rave. One little boy made a bet: "Just wait—we'll get Even with her yet." And so, 'twas not surprising That during the test, she Should see him acting Quite suspiciously. Looking at his watch. Thought she: "Now I'll catch The little rascal cheating." Forewarned, she demanded sternly: "Let me see that watch." He gave it to her meekly. She saw a word on its face: "Fooled." With ill-grace She smiled, and—alack! With horrible pain, She read on its back: "Fooled again."

LECTURES ON SOCIAL HYGIENE PLANNED FOR YOUNG PEOPLE OF S. F.

Dr. Edith Hale Swift To Conduct Lectures from May 15 to 26

For some time prominent second-generation leaders have felt the need of social hygiene education among the young people, and this need is at last being met by the engagement of Dr. Edith Hale Swift of the American Social Hygiene Association, who will conduct a series of lectures exclusively for Japanese in San Francisco and the East Bay from May 15 to 26.

The movement to inform the Japanese people on social hygiene by sponsoring educational lectures was first originated at the Asilomar Conference of the Japanese Students' Christian Association two years ago. Since then, Dr. Akagi, general secretary of the association, has succeeded in engaging Dr. Edith Hale Swift, who is an authority on the subject of social hygiene and has had fifteen years of active medical career, being at present medical examiner at Radcliffe and Wellesley colleges.

MIYA SANNOMIYA IS IN CHARGE:

Miya Sannomiya, who is in charge of the movement for the J. S. C. A., has offered the services of Dr. Swift to the Japanese community of San Francisco, and a meeting of the representatives of about seventeen prominent organizations of San Francisco and the East Bay was held Monday at the Japanese Association hall of this city to accept the offer and make the necessary preparations to welcome Dr. Swift. Most of the lectures will probably be held at the Kimmon Gakuen, though several of them are being planned to be conducted in Oakland. More definite information will appear in these columns later.

Showa Club To Give Big Banquet on Thursday Night

Many Prominent People of Bay Region Are Invited

The Showa Club of San Francisco will give a big banquet on Thursday night, March 31, at the Yuen Tong Low.

The affair is being conducted to celebrate the formal inauguration of the newest athletic organization in San Francisco, and consequently, many prominent people of the Bay Region have been invited.

Among the guests of honor at the banquet will be: Consul-General Taketomi, Rev. Messrs. Kowta and Tsuda, and Messrs. Tomizawa and Fred Koba.

Men who aided Japanese football, prior to the organization of the present Showa Club—Messrs. Obata, Nonaka, Miho, Tashima, and Kaneka—will also be present.

AMERICAN SPORT WRITERS TO ATTEND:

There will also be several noted Americans to add color to the occasion, including Harry B. Smith and Ed. R. Hughes of the Chronicle; and E. D. Grace of the P. A. A. Federation.

The organizations to be represented at the banquet are the Nissei Club of Berkeley; O. S. D. of Oakland, Japanese Student Clubs of Stanford and U. C., the Blazing Arrows, Cathays, Tung Chih, and the Y. M. B. A. of San Francisco.

ably be held at the Kimmon Gakuen, though several of them are being planned to be conducted in Oakland. More definite information will appear in these columns later.

STOCKTON YAMATO CLUB ANNOUNCES LINE-UP OF TEAM FOR SPRING LEAGUE

Elimination of Sacramento Nippons Incorporate Four Team League

The withdrawal of the Sacramento Nippon Stars from the Spring Baseball League consolidated the remaining teams into a quadruple alliance, namely, the Stockton Yamato, Fresno Athletic Club, Alameda Taiiku-Kai, and the San Jose Asahi.

LINE-UP IS ANNOUNCED:

In order to acquaint the public with the various players of the four teams we are publishing the official line-up as they probably will take in their combats:

STOCKTON YAMATO

Nushida, P—SS; Okino, CF; Okada, RF; Miyazishi, LF; Miritani, 1B; Shindo, 2B; Hotta, 2B; Usui, (Henry) 3B; Usui (Chas.), 3B; Ito, C; Yoshimura, SS; Matsumoto, LF; Funamura, RF; Hirano, SS; Suzuki, CF.

Mountainers Hold Huge Picnic at Placer, Sunday

Masquerade Parade Puts Finishing Touch To Gala Day

Under the combined auspices of the Auburn Japanese Association, Auburn Buddhist Church, New Castle Gakuen, and Placer Buddhist Church, a huge annual picnic was enjoyed at the foothills of Placer county.

125 CHILDREN ENJOY PICNIC:

In the wide open nature's playground, over 125 school children in red and white uniforms gambled like trained acrobats.

The final event of the day was the masquerade parade, like those that usually accompany any big circus. This year's picnic was acclaimed one of the most successful events of the vicinity.

Alameda Taiiku-Kai Lose Close Game to Bankers

The Alameda Taiiku-Kai baseball nine was defeated last Sunday by the husky sluggers of the Oakland Central Bank, 3-5.

The game started at 2 p. m. at the Alameda Japanese diamond.

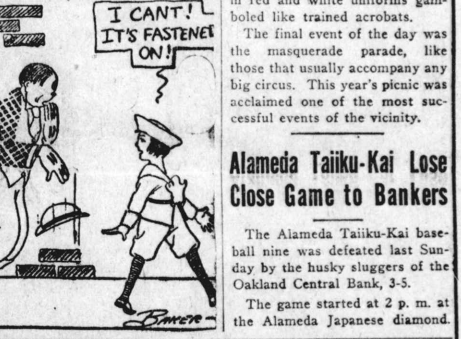
LITTLE JULIUS SNEEZER



PUT OUT YOUR TONGUE, THEN!



BY BAKER



上割も便は郵 げ引の當便郵 各種に印日註 すと限あの註 差りる郵文

街燈祝賀大賣出四月十一日

東一街富田尾商店 (Hondo) 200 E. FIRST ST., L.A.

- フエニス タオル 普通値 廿五仙 特價 十五仙
同枕 五 三 二 三 九 九 九
同枕 五 三 二 三 九 九 九

- 婦人春コート 十四 九 九 九
同シルクドレス 十一 九 九 九
同毛皮 十三 九 九 九

- スリッパ 十五 九 九 九
同旅行靴 十五 九 九 九
同旅行靴 十五 九 九 九

- 旅行靴 十五 九 九 九
同旅行靴 十五 九 九 九
同旅行靴 十五 九 九 九

- スリッパ 十五 九 九 九
同旅行靴 十五 九 九 九
同旅行靴 十五 九 九 九

- 旅行靴 十五 九 九 九
同旅行靴 十五 九 九 九
同旅行靴 十五 九 九 九

愈々東第一街に街燈がつく様になりました。過去數年間に偉大の發展をした日本人町は新市廳への直通路として益々美觀と賑かさを増して來ます。今回祝賀の意を表する爲め破天荒の大割引賣出しを催す事になりました。商品全部に亘る特價提供春夏物お支度の好チャンス。當日は何卒續々とお買上を御願ひ申上ます (ほんの一部だけ御紹介)